

**BX SHINSEI SEIKI CO.,LTD**

**SHUTTER OPERATOR**

**ULC-12GSC**

**ULC-25GSC**



# ROLLING SHUTTER OPERATOR

MODEL: ULC-12GSC/ 25GSC

1. PRODUCT OVERVIEW
2. PRODUCT FEATURES
3. PRODUCT COMPOSITION
4. Q&A





## PRODUCT OVERVIEW

- The ULC Series is Japanese products manufactured basing on JIS (Japanese Industrial Standards).
- The ULC series has several models, but here we introduce ULC-12GSC and ULC-25GSC.
- They can wind 250kg and 500kg shutters respectively.

# PRODUCT FEATURES

## 1. HIGH PRECISION DIGITAL CONTROL

Stable rotation control is achieved by adopting a high-precision digital control system for DC brushless motors. It ascends or descends at the same speed regardless of the power supply frequency.

シャッター開閉機

**ULC-12GSC/12GSCR**

「安全・安心」「省エネ」「静かさ」を追求した新しいタイプのシャッター開閉機です。

安心安全

省エネ

静音設計

高精度  
デジタル制御



## 2. SAFE AND SECURE DESIGN

By detecting obstacles, accidents can be prevented. When it senses an obstacle, it stops instantly and reverses upward. The load sensitivity can be adjusted by 10 levels. The seat-plate switch used conventionally is unnecessary.

# PRODUCT FEATURES

## 3. ENERGY SAVING DESIGN

When the shutters descend, the electrical energy generated by the motor is recovered, realized low power consumption during shutter closing.

## 4. QUIET DESIGN

Speed control is performed at the time of operation start/ operation stop, realizing excellent quietness compared to conventional products.

# PRODUCT COMPOSITION

# SHUTTER OPERATOR

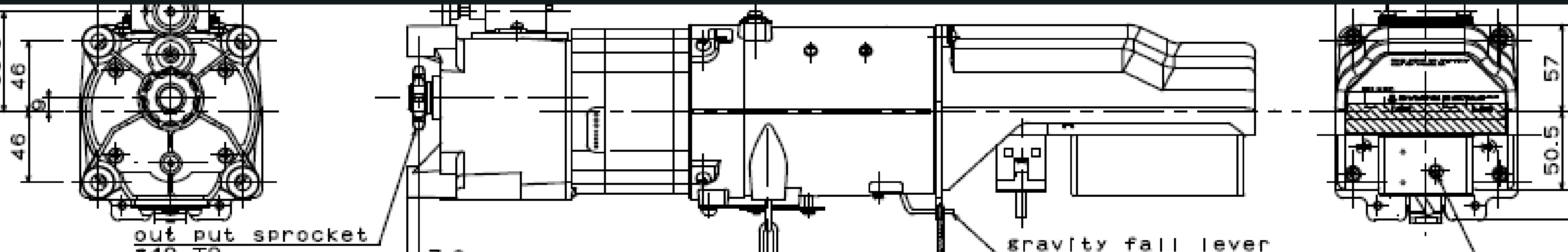
## DC BRUSHLESS MOTOR

### DURABILITY

Long lifetime and  
low noise.

### EFFICIENCY

The conduction efficiency of  
the motor is about 20%  
better than the induction  
motor.



# PRODUCT COMPOSITION



## BRACKET

Versatility with many models, sizes and shapes to accommodate a variety of fits.

**THANK YOU FOR LISTENING**

Contact us

Address 🏠

687, Kamodani-cho, Kasai City, Hyogo

675-2444, Japan

Email ✉️

[sales@shinseiseiki.co.jp](mailto:sales@shinseiseiki.co.jp)

Tel 📞

+81-790-44-1161

