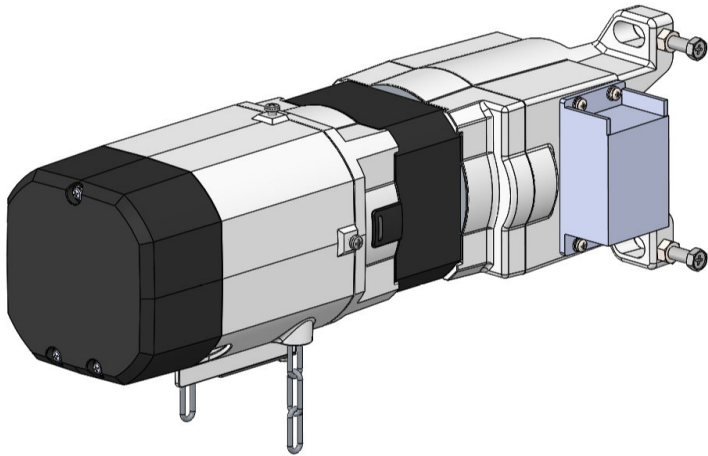


New Product!

Made in Vietnam Shutter Operator

**Model : BSV-300
BSV-500**

Specification



Package : ①Operator & Push Button Switch
 ②Bracket & Flange Unit
 ③Receiver & Transmitters(2pcs)

Model		BSV-300				BSV-500			
Voltage		1PH220V		1PH230V		1PH220V		1PH230V	
		50Hz	60Hz	50Hz	60Hz	50Hz	60Hz	50Hz	60Hz
Winding Capacity	(kg)	300 (With 4B Drum : Drum Dia. ϕ 114.3)				500 (With 5B Drum : Drum Dia. ϕ 139.8)			
Min. Fall Load	(kg)	20 (With 4B Drum : Drum Dia. ϕ 114.3)				17 (With 5B Drum : Drum Dia. ϕ 139.8)			
Winding Drum Speed	(r.p.m)	4	4.6	4	4.6	4.0	4.8	4.2	4.9
Output Shaft	Torque	40.1				80.2			
	Min. Fall Torque	2.0							
	Speed	22.2	25.6	22.2	25.6	22.2	26.7	23.3	27.2
Motor	Output	125				250			
	Full-load Current	1.4	1.9	1.4	1.9	2.1	3.0	2.1	3.0
	Time Rating	5							
Max. Range of Limit Switch	(turns)	640							
Roller Chain		#50 : Chain Pitch 12.70, Roller Dia. ϕ 7.92							
Sprocket Output side/Drum side		#50-T9 / #50-T50							
Operator Weight	(kg)	11.6				12.9			

Remarks :

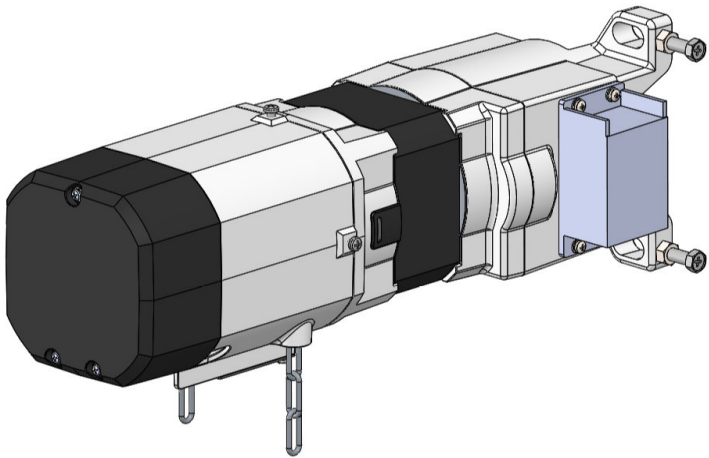
Usage environment : Ambient temp. 0 °C~+ 5 0 °C (without freezing, dew condensation) ,
 Ambient humid. Less than 8 5 %RH.

Time rating is the value measured at + 2 0 °C. If the temperature exceeds this value, the time rating gets shorter.

Shutter shall be surely equipped with the emergency limit switch.

Durability: 5 , 0 0 0 opening and closing.

Shutter Opening / Closing Speed



Condition :

*Shutter height: 5.0m

*Shutter Operator Output Sprocket: #50-T9

*Drum Sprocket: #50-T50

*Winding Drum: 4B

Winding Drum Speed(4B Drum, H=5.0m): **6.69 rotations**

Drum Sprocket(#50) Teeth No.: **50T**

Output Sprocket(#50) Teeth No.: **9T**

Output Sprocket Speed(Ascend): **22.7 r.p.m.**

Output Sprocket Speed(Descend): **22.2 r.p.m.**

Shutter Opening Time: 1.6 min.

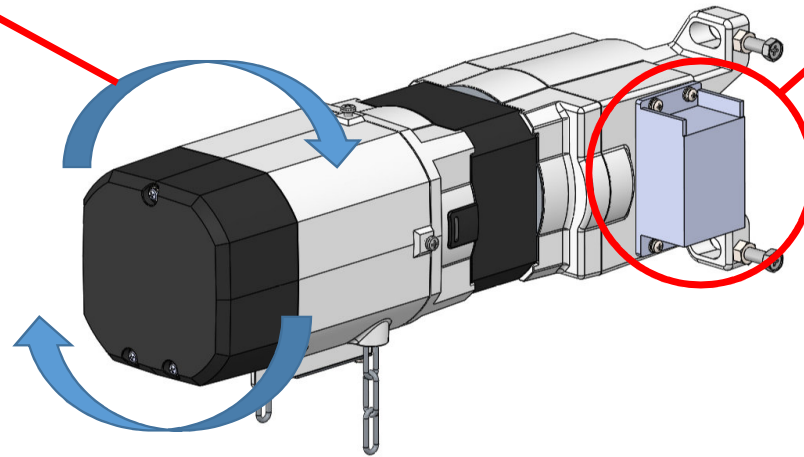
Shutter Closing Time: 1.4 min.

(Opening and Closing: 3.0 min)

Feature of the Operator

Feature①

Brake case can rotate by 90° and it enables switching Right-hand/Left-hand installation easily.



Feature②

One-touch type Limit Switch enables setting Upper/Lower Limit easily.

※Please refer to installation manual

Stopping Accuracy of Limit Switch

Braking Distance Standard:

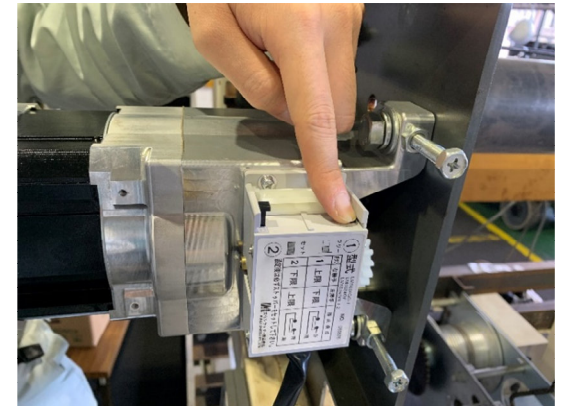
*Output sprocket rotation angle: 60° or below

*Winding drum rotation angle: 10.8° or below

Actual measured result(Max value):

*Output sprocket rotation angle: **24.5°**

*Winding drum rotation angle: **4.4°**

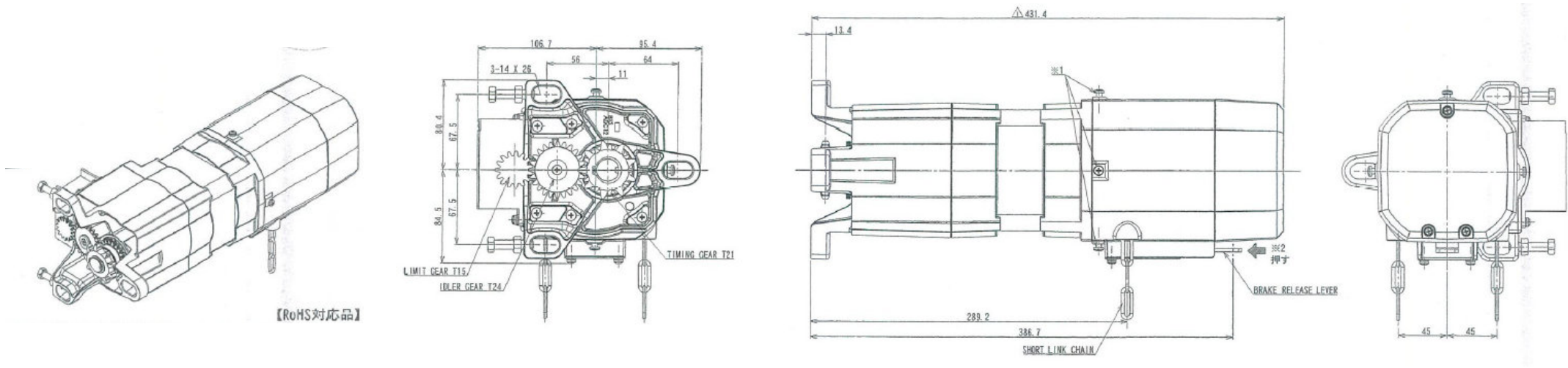


Feature③

Compatible with certain models of other brands. Therefore, shutter operator can be replaced with present structure.(No need to change bracket etc)

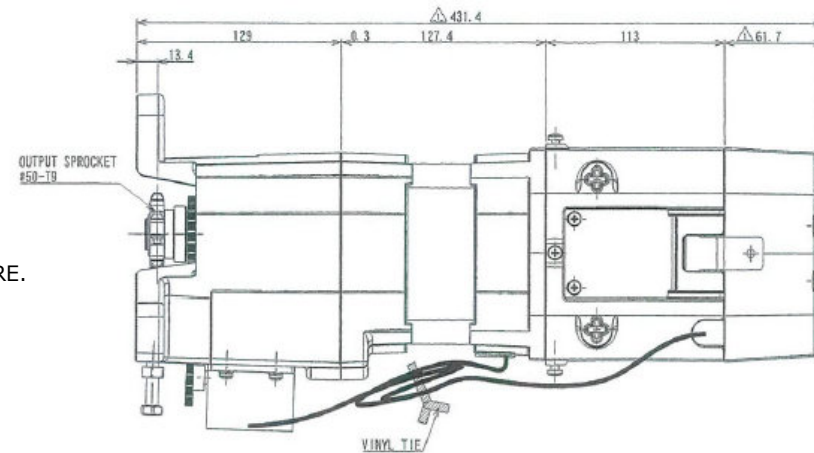
※Please contact to engineer to confirm compatibility in advance.

External view : BSV-300

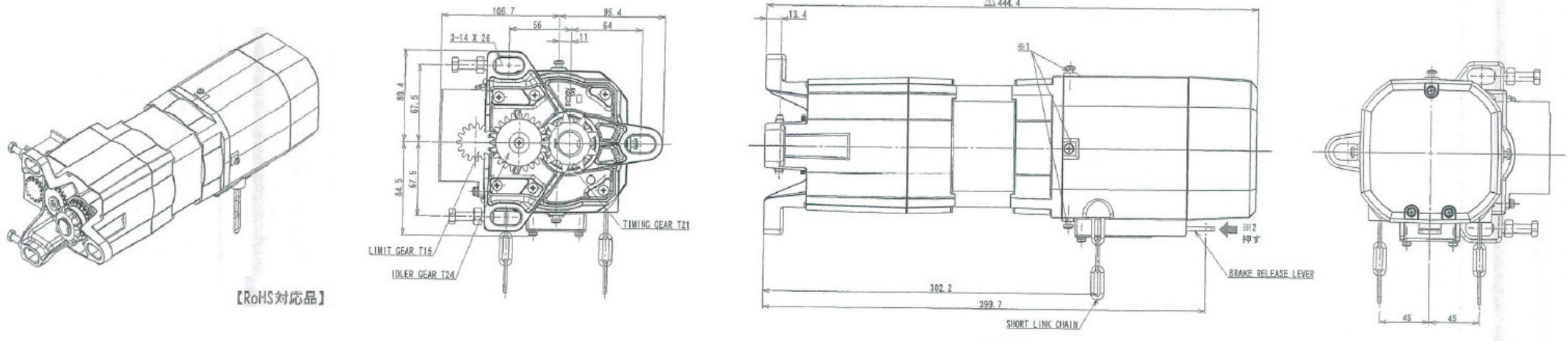


Note :

1. This is appearance drawing of shutter operator model BSV-300.
2. BSV-300 has Right/Left-hand installation and this drawing shows Right-hand installation. Initial installation is Right-hand, therefore if Left-hand is needed, installation should be switched to the Right-hand at site.
3. To switch Right-hand installation to the Left, follow the procedures below;
 - (1) Loosen 4 screws on the side of the BRAKE CASE. (※1)
 - (2) Remove the vinyl tie that bundles LIMIT SWITCH LEAD WIRE and MOTOR LEAD WIRE.
 - (3) Turn the BRAKE CASE 180° clockwise as viewed from the BRAKE CASE side.
 - (4) Tighten 4 screws loosened in (1)
4. To descend shutter slats manually, press the BRAKE RELEASE LEVER. (※2)

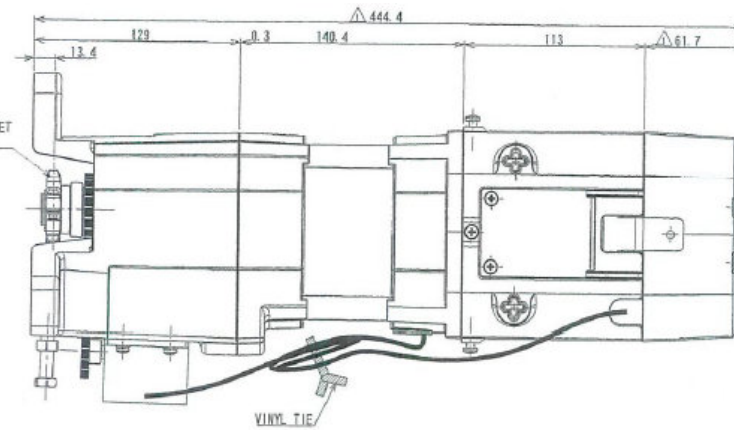


External view : BSV-500



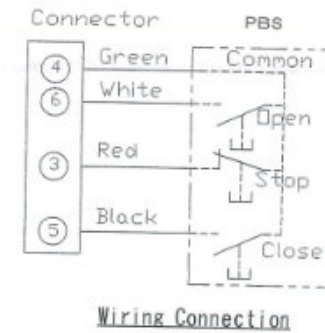
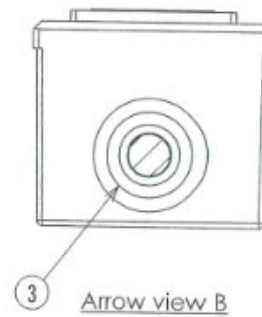
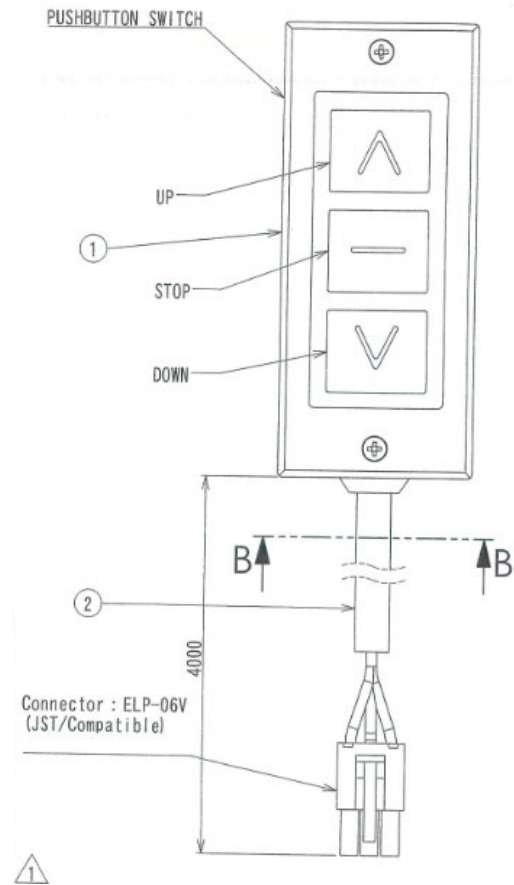
Note :

1. This is appearance drawing of shutter operator model BSV-300.
2. BSV-300 has Right/Left-hand installation and this drawing shows Right-hand installation. Initial installation is Right-hand, therefore if Left-hand is needed, installation should be switched to the Right-hand at site.
3. To switch Right-hand installation to the Left, follow the procedures below;
 - (1) Loosen 4 screws on the side of the BRAKE CASE. (※1)
 - (2) Remove the vinyl tie that bandles LIMIT SWITCH LEAD WIRE and MOTOR LEAD WIRE.
 - (3) Turn the BRAKE CASE 180° clockwise as viewed from the BRAKE CASE side.
 - (4) Tighten 4 screws loosened in (1)
4. To descend shutter slats manually, press the BRAKE RELEASE LEVER. (※2)

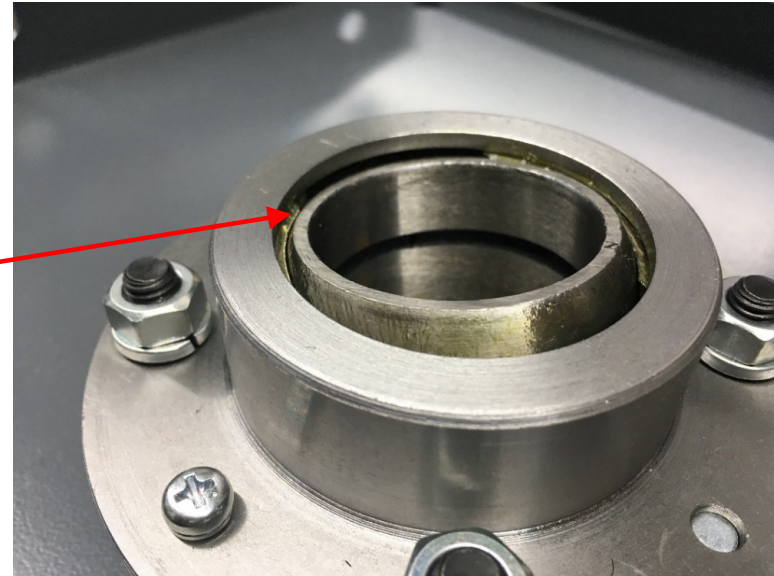
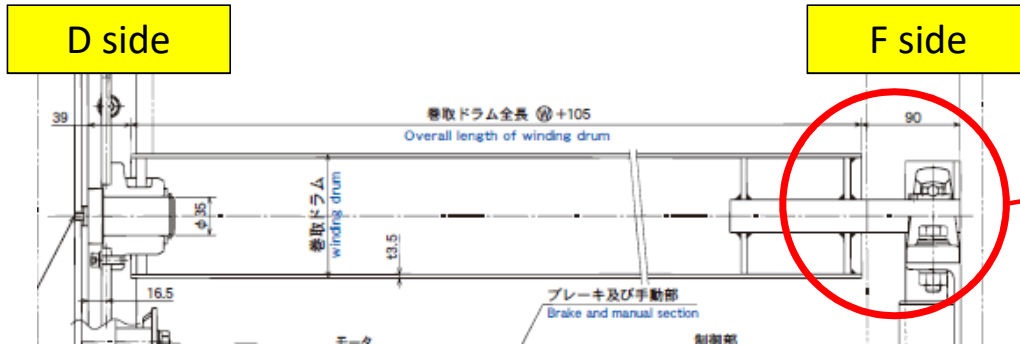


External view of Push Button Switch

*Common for BSV-300 & 500

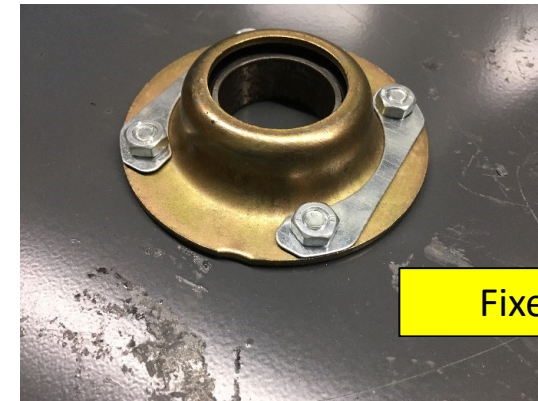


Feature of the Bracket



Feature

Shaft bearing on the F side bracket is movable type. Compare to fixed type, it is more flexible in installation and reduce the risk of abnormal behavior.(Noise, Vibration or Bearing breakdown)

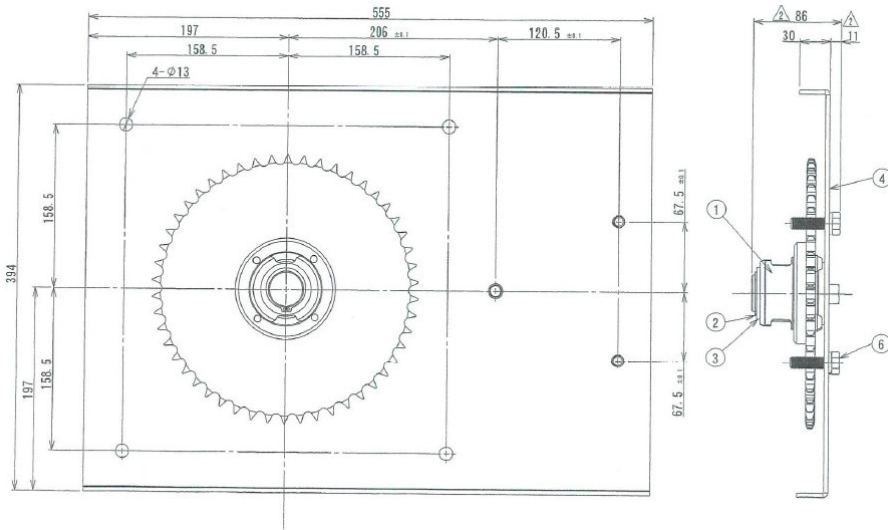


Fixed type

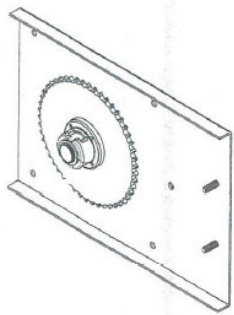
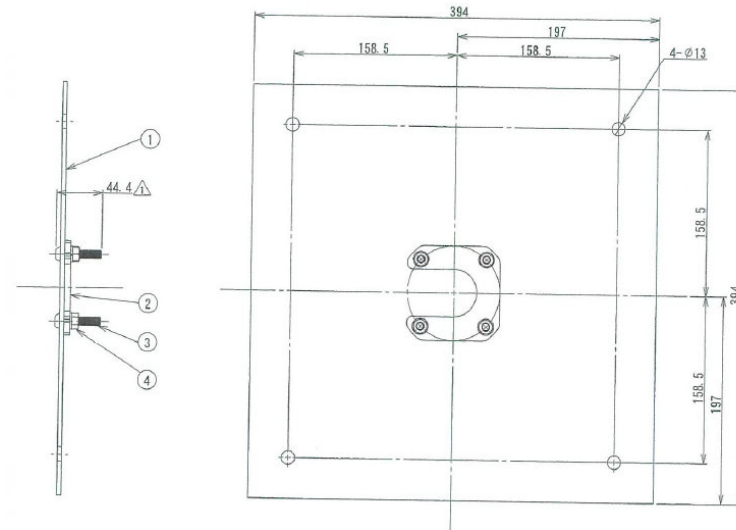
External view of Bracket

*Common for BSV-300 & 500

D side Bracket



F side Bracket

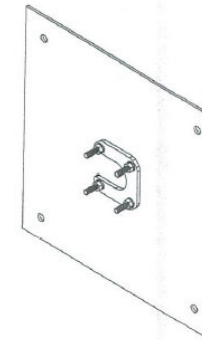


Note :

- ① Drum Sprocket Assembly
- ② C type Retaining Ring
- ③ Drum Sprocket Washer
- ④ D side Bracket Sub Assembly
- ⑤ Mounting Bolt

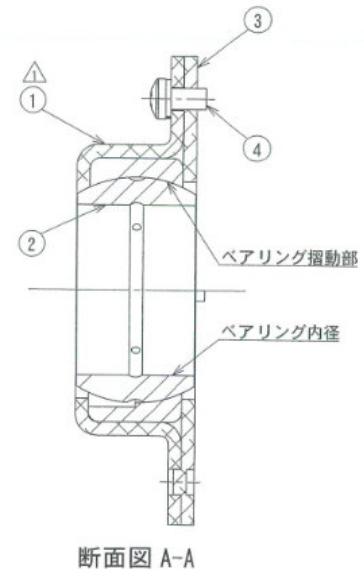
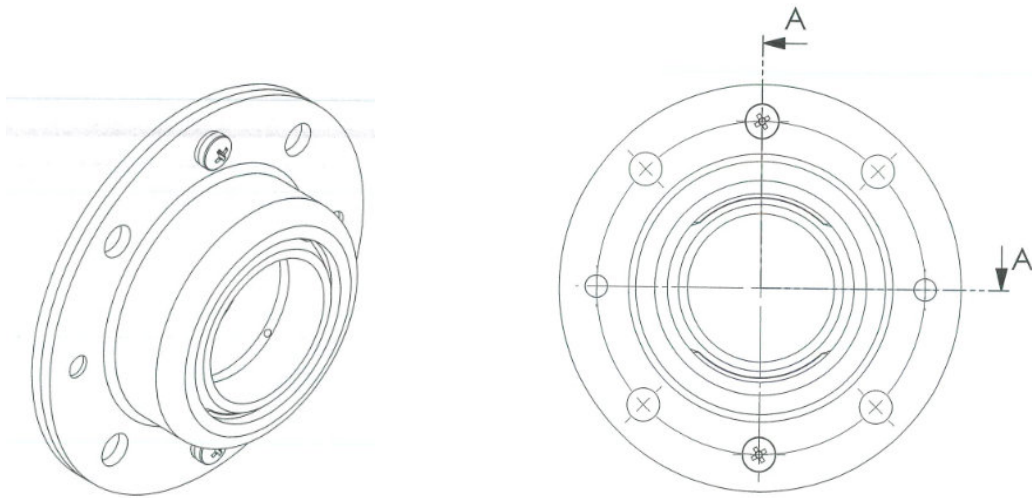
Note :

- ① F side Bracket
- ② Flange Unit Base
- ③ Hexagon Socket Button Bolt
- ④ Spring Nut



External view of Flange Unit

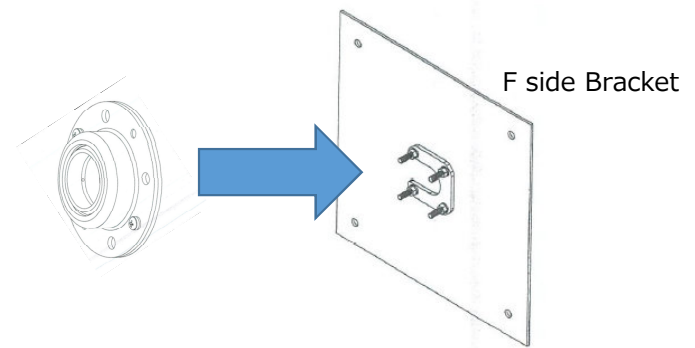
*Common for BSV-300 & 500



- Note :
- ① Flange Unit Case 1
 - ② Bearing
 - ③ Flange Unit Case 2
 - ④ Cross-recessed Pan head Screw

Note :

- 1. To find out the inside or outside of the bearing, define the side of the inner ring taken out as Flange Unit Case 1.
- 2. Make sure to put grease (Idemitsu Daphney Grease MP(NO. 1)) on the bearing sliding part.
- 3. Make sure to put small amount of grease (Idemitsu Daphney Grease MP(NO. 1)) on the inner dia. of the bearing.
- 4. Flange Unit should be packed with nylon bag and put into the Bracket Package altogether.



Feature of Receiver Kit



Package : Receiver : BSV-R
Transmitter : BSV-T (2pcs)
Input/Output Harness

Feature

- Transmitter is water-proof and dust-proof which protection level is IP56. The structure protects transmitter from rain water or dust getting in. And slide cover can prevent users' misoperation. Transmitter comes with key ring and it can prevent loss as well.
 - The connectors of the receiver and input/output harness are specially designed not to get connected wrongly. Therefore, it is very easy to connect and set up with shutter operator.
 - Max. 20pcs of transmitters can be registered to the receiver and registration procedure is very simple and easy.
- ※Please refer to a manual for the setting.

Others

- BSV-300, 500 are shutter operators designed in Japan and manufactured in Vietnam.
- 70% of component parts are arranged in Vietnam, but local suppliers are all evaluated and chosen by BX Shinsei Seiki.
- All facilities and manufacturing processes are supervised by BX Shinsei Seiki and production lines are equivalent to Japanese ones in quality.

☆ Products will be exported directly from Vietnam(Hanoi).